



## MECLEAD DRILLING EQUIPMENT

Foundation Drilling Tools



<https://meclead.com>

# Bullet Teeth Round Shank Chisel



Dirt



Sand



Silt



Clay



Gravel



Fracturate  
rock



Non-Fracturate  
rock

## Extra-coarse carbide of world-class top level

The MECLEAD bullet employs top-level extra-coarse tungsten carbide. It has a much better heat transfer capability. Even in hard and highly abrasive formations, the insert can relatively maintain a low temperature.

## Master of Brazing

MECLEAD employs the latest automatic welding machine. This machine strictly controls the brazing temperature within a tolerance of  $\pm 10$  degrees. By integrating brazing and heat treatment in a single heating process, it minimizes decarbonization.

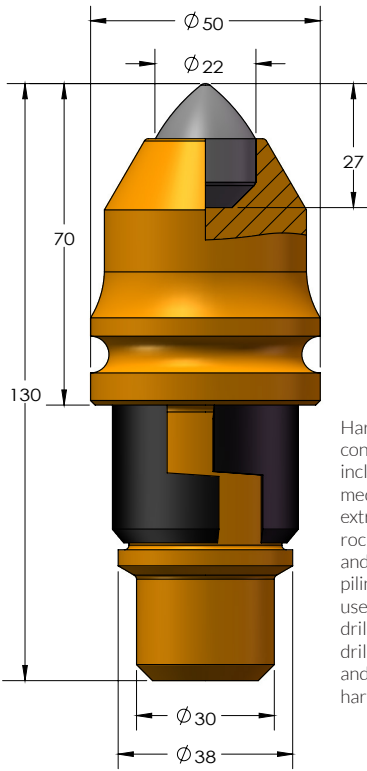
## Antiwear body

The body is manufactured using a special high wear resistance material and a low-temperature forging process.



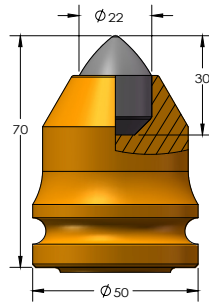
# ROUND SHANK CHISEL

# BORE PILE



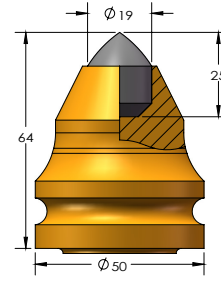
M50-22x27

Hard ground conditions, including medium to extremely hard rock, concrete, and foundation pilings. They are used in rotary drilling augers, drilling buckets, and excavation in hard layers.



M50-22x30

The longer depth of the carbide will increase the durability of the teeth.



M50-19x25

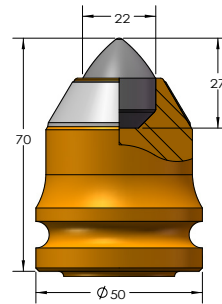
For the medium and medium hard rock formation, the shaper tips can achieve high speed penetration and drilling speed.



**Fracturate rock**

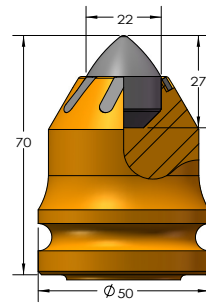


**Non-Fracturate rock**



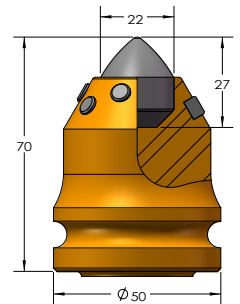
M50-22x27P

For the abrasive application. Extra tungsten carbide layer for extra protection.



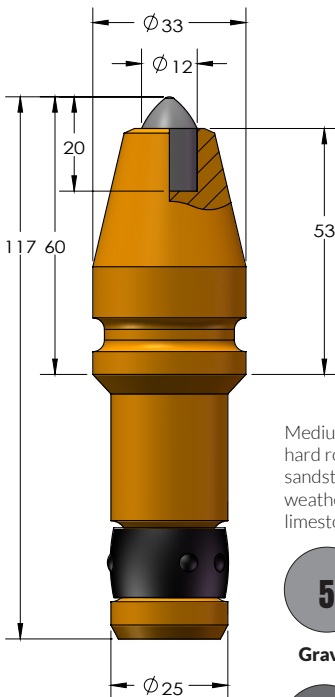
M50-22x27S

Carbide strips applied on the body for the red sandstone, etc, are highly abrasive, with less impact formation.



M50-22x27B

Heavy-duty design with carbide bullets applied to the body, suitable for the highly abrasive and highly impact-resistant hard rock formation.



C31HD

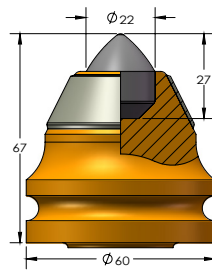
Medium to hard rock, like sandstone, weathered limestone.



**Gravel**

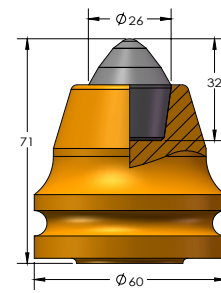


**Fracturate rock**



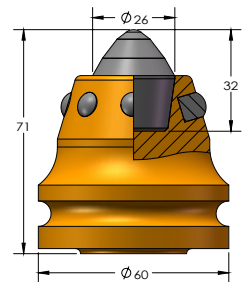
M60-22x27P

For the hard rock, the 60mm body with a combined carbide layer is suitable for the abrasive hard rock.



M60-26x32

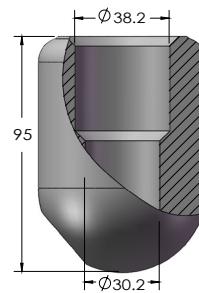
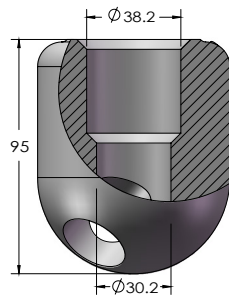
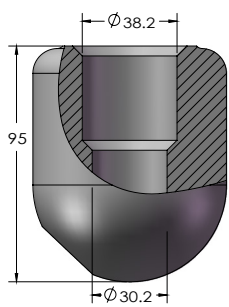
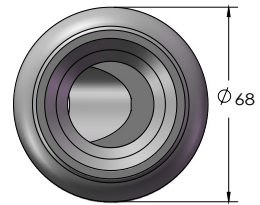
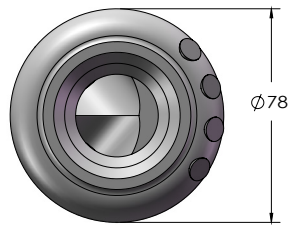
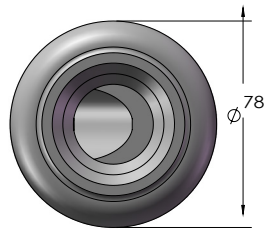
For the extreme hard rock, UCS more than 60MPa, little weathered limestone, and granite.




M50-26x32B


For the extreme hard rock combined with a highly abrasive formation like quartz, fractured hard granite.

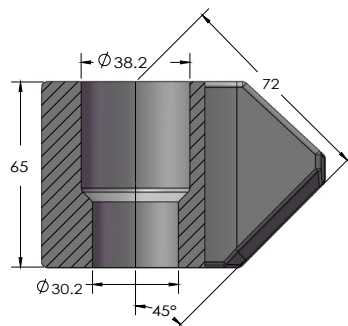
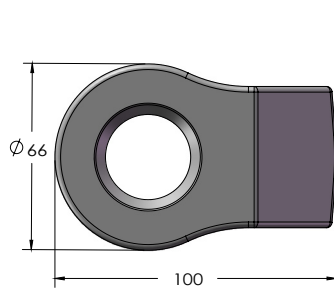
# HOLDER 30-38MM SHANK



**78-95**   
Heavy-duty Core barrel holder, high torque application.

**78-95B**   
Heavy-duty and highly abrasive formation. The bullet teeth will prevent premature holder weld-out.

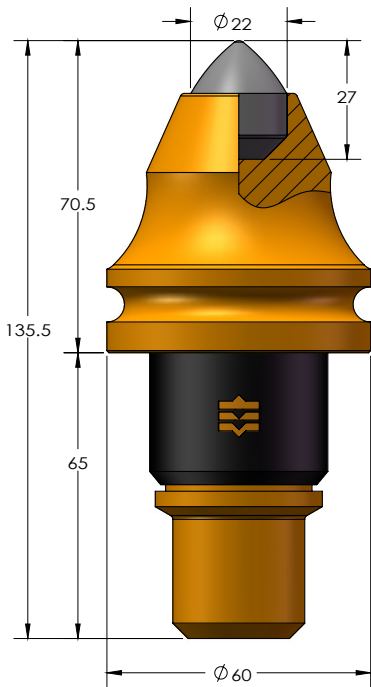
**68-95**   
Round holder for the small diameter core barrel, and narrow cutting ring application.



Drilling Bucket and core barrel are the most commonly used holders.

**B43** 

# DIAPHRAGM WALL TRENCH CUTTER



For the medium to hard rock, more than 30-50 Mpa trench cutter application

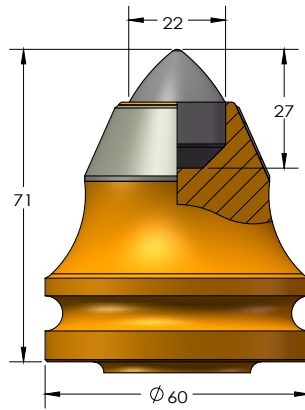
T60-22x27



Fracturate rock

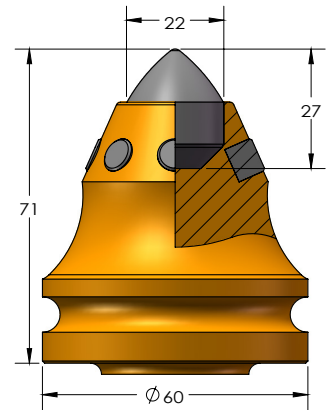


Non-Fracturate rock



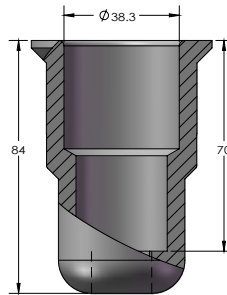
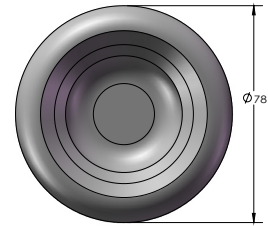
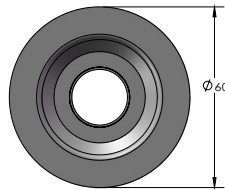
T60-22x27P

Suitable for the highly abrasive formation. The tungsten carbide layer will help to protect the teeth's body.

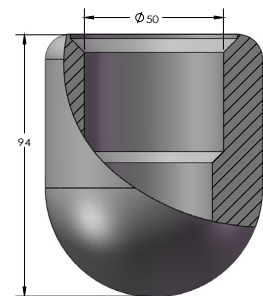


T60-22x27B

Suitable for the highly abrasive formation. The tungsten carbide layer will help to protect the teeth's body.

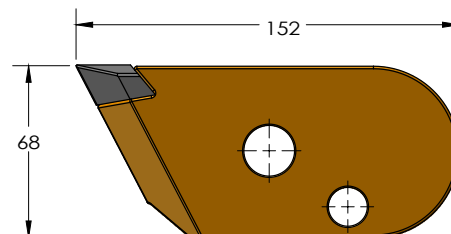
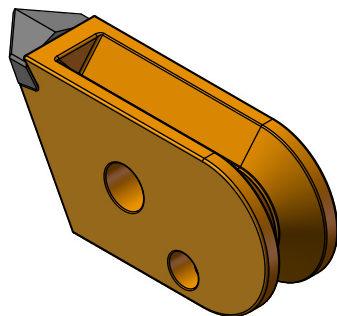


T60-22x27



T60-22x27

For the soft rock, gravel, and clay formation. Fast penetration speed in the medium to medium-hard formation.



Clay



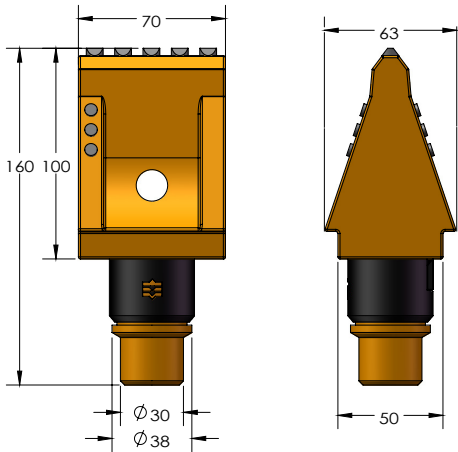
Gravel




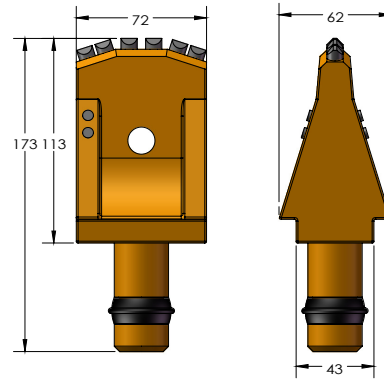
Fracturate rock


BC Teeth -M

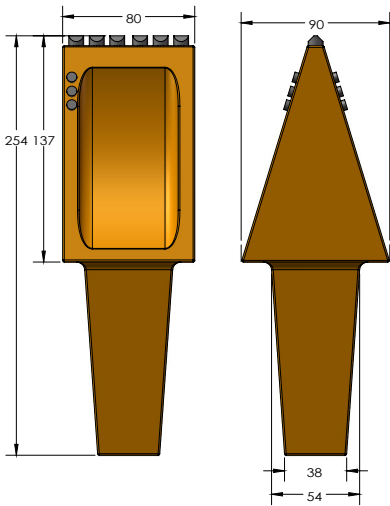
# FLAT TEETH







MFZ-70 



MFZ-72 



MFZ-80 

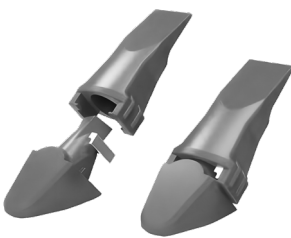
-   
**4**  
Clay
-   
**5**  
Gravel
-   
**6**  
Fracturate rock

Suitable for hard soil, frozen soil, gravel, and soft rock formation. The thickened forging body and carbide tips will help last longer in the medium and formation.

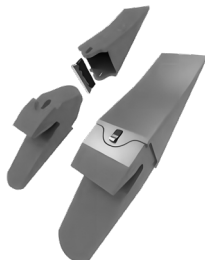
# BUCKET TEETH

-   
**1**  
Dirt
-   
**2**  
Sand
-   
**3**  
Silt

For dirt, sand, silt, soft, and medium soil.



V20

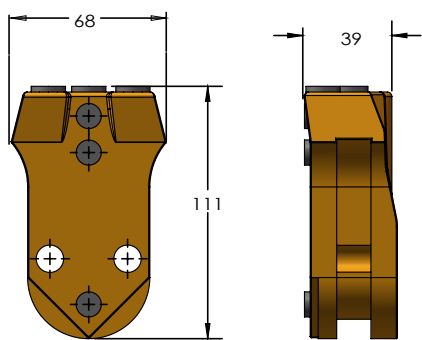


18T

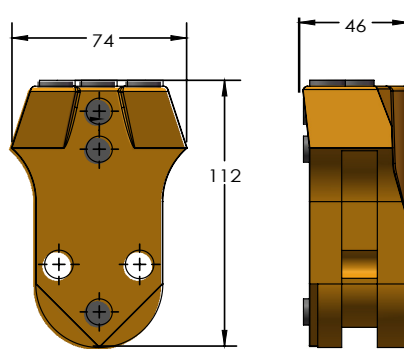



25T

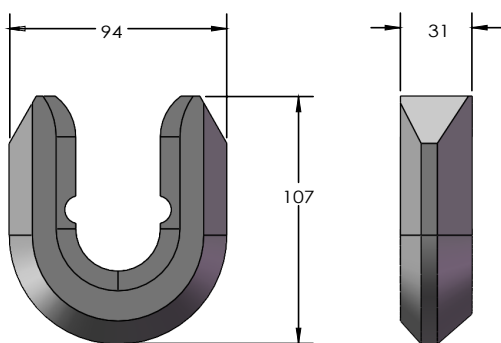
# CASING TEETH & ACCESSORIES




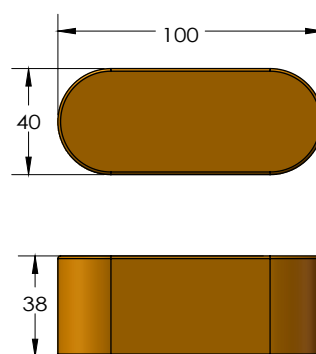
WS 39 



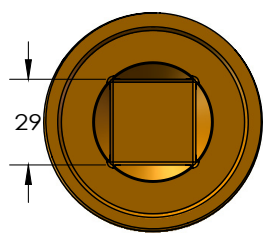
WS 46 



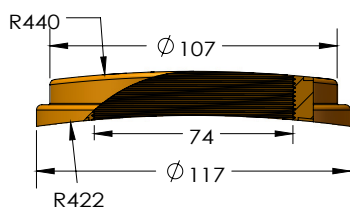
WS Holder 



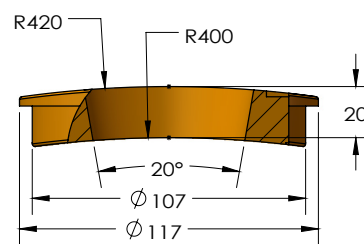
MRV32 



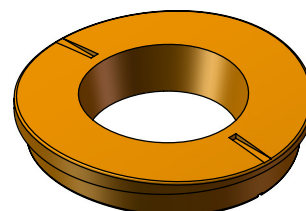
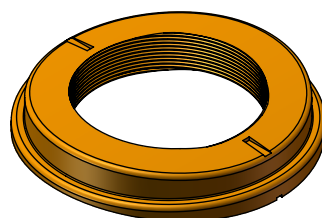
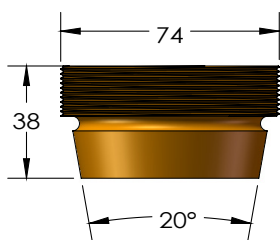
MRV23 



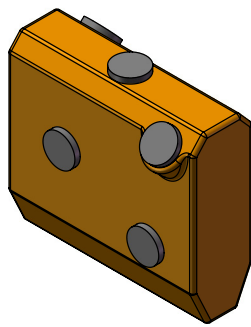
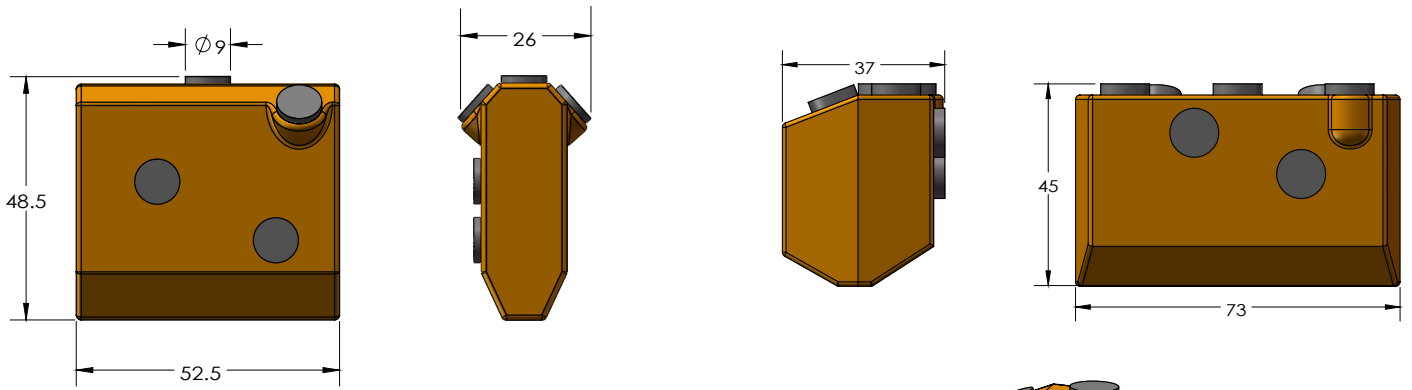
MRV02 



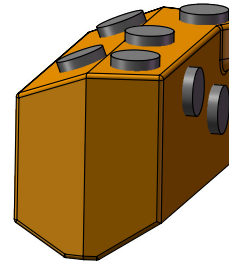
MRV03 



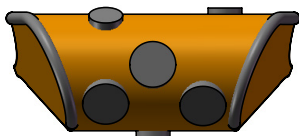
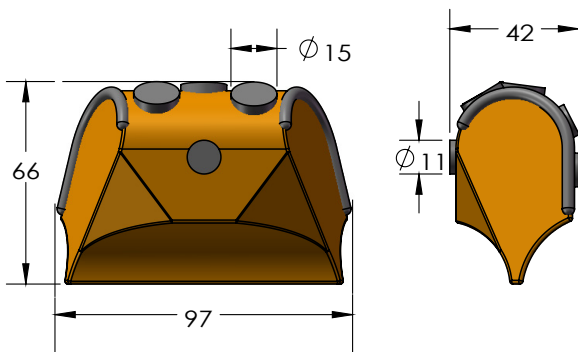
# WELDING BARS



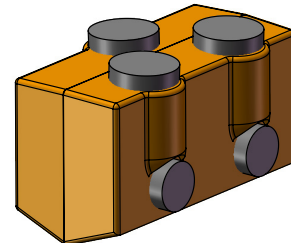
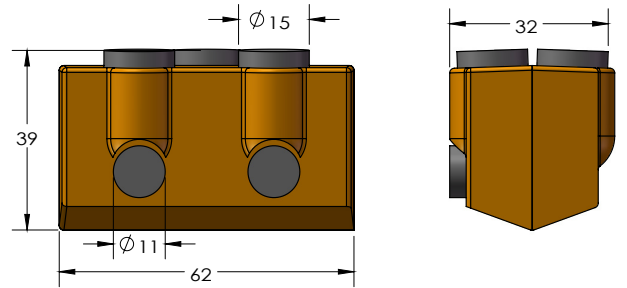
MA10  50



MA04  20



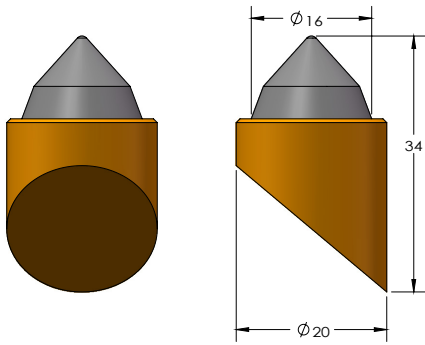
MA25  10



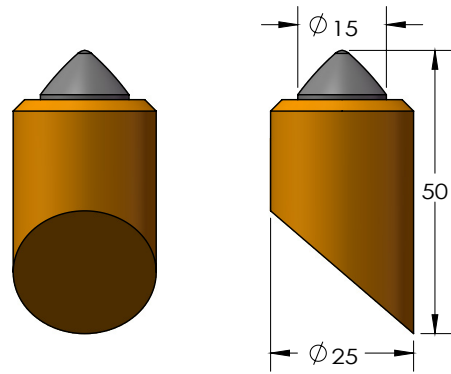
MA32  25

# WELD-ON TEETH

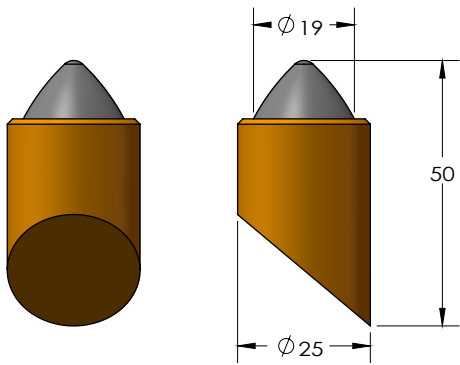
---



MFZ158



MFZ207



MR3-19



Used in the medium to hard rock cutting and body protection.

# MECLEAD



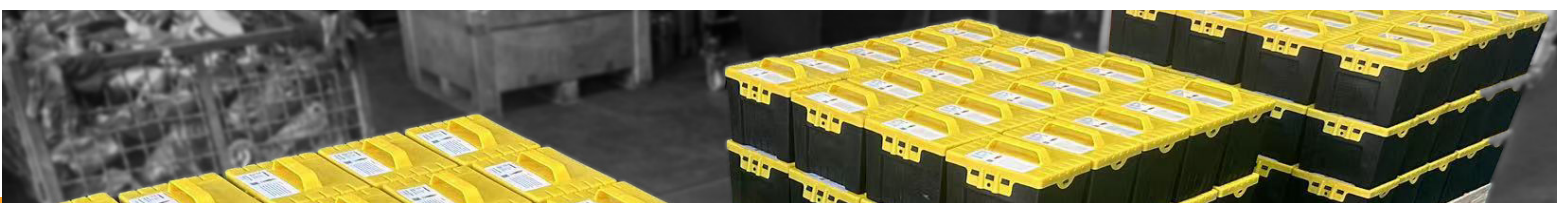
MECLEAD(Cangzhou Meclead Engineering Co.,Ltd.) is a manufacturer specializing in pdc reamer, pdc bit, tricone bit, tricone hole opener, roller cutters, piling rollers, round shank chisel.

Established in 2010, the company positions itself as a leading expert in the piling and HDD rock drilling industry.

Through years of dedicated work, MECLEAD has earned the trust of both domestic and overseas markets. It enjoys a good reputation in Shenzhen and Guangzhou and is rapidly expanding its products in South Asia, the Middle East, and Europe.

“Deep knowledge of industry pain” is MECLEAD’s core value. The company believes that its strength stems from consistently learning about customers’ problems and application challenges.

With a deep understanding of the industry, MECLEAD has developed a full range of roller bits, bullet teeth, and core barrels for all kinds of piling applications.





How to weld roller bit or a bullet teeth?  
How to increase the penetration speed?

Scan the QR code to get the latest knowledge about hard rock piling

## **CANGZHOU MECLEAD ENGINEERING CO.,LTD.**

Tel: +86-317-2020557

Fax: +86-317-5527222

Add: Junziguan Industry zone, Cangzhou, Hebei, China.

Copyright © 2025 by MECLEAD

All rights reserved. This document or any portion thereof may not be reproduced or used in any manner whatsoever without the express written permission of the publisher.